



Active Transport: State and local government planning opportunities

Juliet Grant
Manager, Transport Planning



Contents

- Who is the Ministry of Transport?
- What is active transport?
- Why do we support active transport?
- How can the planning process support active transport... at state and local levels?
- Sources of information



Who is the Ministry of Transport?

MoT is the lead agency within the transport portfolio.....

MoT comprises two distinct divisions:

- policy and strategic co-ordination
 - transport planning; bus reform; fares; freight; ferry policy; transport infoline
- finance and operations
 - bus contracts; STSS; local and community transport; regulation of taxi and hire cars; corporate services



What is active transport?

Active transport is about

more people walking, cycling and using
public transport

for their daily transport needs.



MINISTRY OF TRANSPORT

Why do we support active transport?

- It is good for our health (mental and physical)
- It is good for the environment
- It is good for business (reduces congestion)
- It is fun!



How can the planning process encourage active transport?

- Policy formulation
- Infrastructure programs and initiatives
- Local planning
- Development applications
- Behaviour change programs
- Funding and delivery mechanisms



State policy framework

- NSW State Plan
- Regional strategies (DoP)
- Planning Guidelines for Walking and Cycling (RTA/DoP)
- Bike Plan 2010 (under review)
- Action for Air (DECC)
- Obesity prevention strategies (NSW Health)
- Design Guidelines (Landcom)



Local Planning

- Rezoning Process:
 - EP&A Act - Section 117 Direction 3.4 (ILUT)
 - Local environmental studies
 - Section 62 – Consultation
- Community Strategic Plan
- Council Management Plans
- Open space planning
- Local area traffic management



Development applications

- Background studies:
 - Integrated transport and land use studies (ITLUS)
 - Transport mobility and access plans (TMAP)
 - Accessibility mapping
 - Health Impact Assessments (HIA)
 - Pedestrian Access Management Plan (PAMP)
- Director General's Requirements (DGRs):
 - major projects
 - state significant sites



Development applications

- Urban design considerations:
 - road networks
 - bike/pedestrian pathways
 - lighting
 - signage
- Conditions of consent:
 - provide showers and bike lockers
 - prepare a travel access guide (TAG) or green travel plan
 - employ a mobility manager



Behaviour change programs

- TravelSmart (Commonwealth)
- On Your Bike and SMILE (DECC)
- Healthy Planning workshops and case studies (PCAL)
- ABC Active Travel Program (SSWAHS)
- Travel Access Guide Workshops (RTA)



Travel patterns can change...



Funding / delivery mechanisms

- Planning Reform Funds (DoP)
- Voluntary Planning Agreements
- Special Infrastructure Contributions
- Infrastructure Australia Fund (Commonwealth)

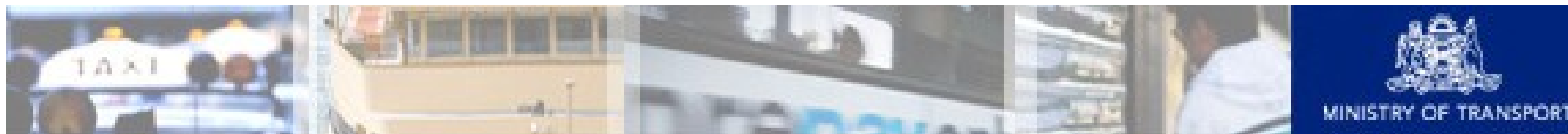
and within the State budget process....

- State Infrastructure Strategy
- Total Asset Management Plans
- Annual budget process



Sources of information

- www.transport.nsw.gov.au
- Transport Infoline www.131500.info
- Census data (ABS)
- Transport Data Centre (MoT)
- Ticketing data (bus operators)
- Specific surveys
- Other sources such as enrolments at TAFEs and Universities
- PCAL website



Thank You

Juliet Grant

(02) 9268 2241

juliet.grant@transport.nsw.gov.au

